



Jupiter

A publication of the Jupiter Section of the Association of Lunar and Planetary Observers

Copyright (c) 2010

Vol. 12, No. 14

September 17, 2010

Apparition Dates:

Jupiter was at Solar conjunction on February 28, 2010

Jupiter reaches opposition on September 21, 2010

Jupiter returns to conjunction on April 6, 2011

Opposition is near.

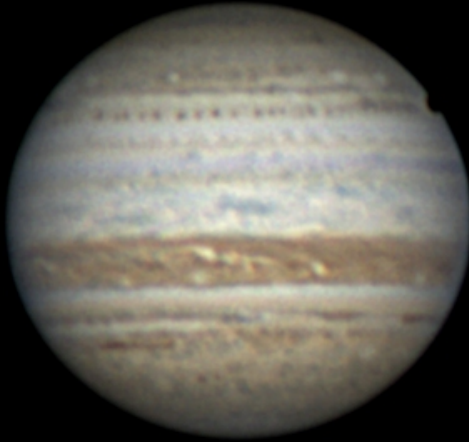
Recent images.

Images differ by approximately 90 degrees of longitude



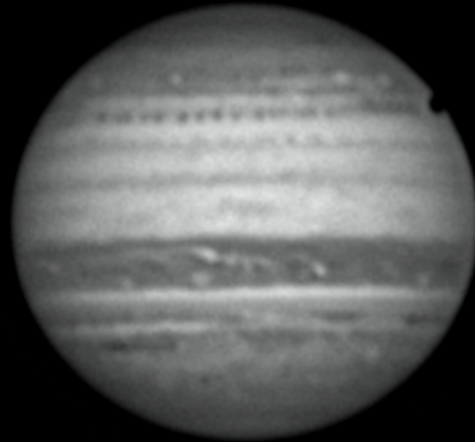
South and Preceding indicated on image.

RGB



23 H 54 : 2 UT
I 221 II 279 III 122

B



23 H 56 : 5 UT
I 223 II 280 III 123

IR 700 nm+



00 H 05 : 0 UT
I 228 II 285 III 128

Christophe PELLIER

R



23 H 59 : 4 UT
I 224 II 282 III 125

Cassegrain 250 F/31 (110 - 120 %)
SKYnyx 2.0M

III

South is up. Preceding to the left.

Jupiter
2010 09 15 UT
Camera: SPC900NC
C5 +2.5x PowerMate (f/25)
UV/IR blocking filter
400/2000 images
Seeing: 8/10

0445 UT



cm I= 310.7
cm II= 336.1

0545 UT



cm I= 347.3
cm II= 012.4

0642 UT



cm I= 022.1
cm II= 046.8



Richard Hill
Jim Loudon Obs.
Tucson, AZ
RHILL@LPL.ARIZONA.EDU

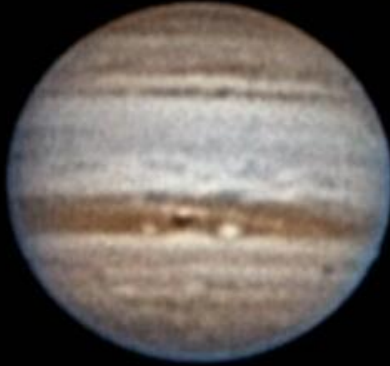
South is up. Preceding to the left.

Jupiter
September 6, 2010

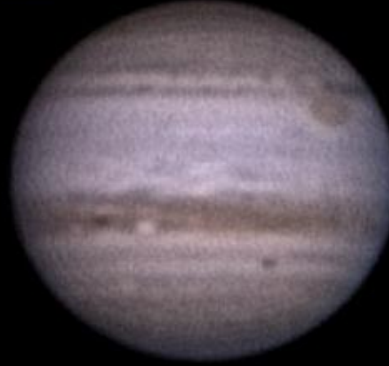
Frank J Melillo
Holtsville, NY
MEADE 10-inch
Toucam Pro II
Seeing: 8/10

SOUTH

EAST



5:19 UT
CM I - 349°
CM II - 083°
CM III - 284°



6:04 UT
CM I - 016°
CM II - 110°
CM III - 312°



6:31 UT
CM I - 033°
CM II - 126°
CM III - 328°



7:03 UT
CM I - 053°
CM II - 146°
CM III - 347°



Methane light
890nm +/- 10nm

8:14 UT
CM I - 096°
CM II - 189°
CM III - 031°

South is up. Preceding to the left.

Submission of Observations

Note to imagers: Please put your name, UT date, UT time, and CM1 and CM2 on all images.

Please submit observations as directed below:

Mail CM transit timings monthly to:

John McAnally
2124 Wooded Acres
Waco, TX 76710
E-mail: CPAJohnM@aol.com

Mail photographs and images at least monthly. We prefer e-mail attachment of JPG image.

Richard W. Schmude
Gordon College
Division of Mathematics and Natural Science

419 College Dr
Barnesville, GA 30204
E-mail: Schmude@gdn.edu

Mail observations of the timings of eclipses of Jupiter's satellites to:
John E. Westfall
P.O. Box 16131
San Francisco, CA 94116
E-mail: johnwestfall@comcast.net

ALPO_Jupiter

Join *ALPO_Jupiter*, the Jupiter Section's E-mail network. Provided for observers of Jupiter to share observations, make comments, ask questions and generally provide help to each other.
To join, send a blank e-mail to ALPO_Jupiter-subscribe@yahoogroups.com

Newsletter Editor: Craig MacDougal, Assistant Coordinator, ALPO Jupiter Section

Email: macdouc@verizon.net



- Recent Posts

- [Observing Alert for the SEB](#)
- [Jupiter Newsletter Vol. 12 No. 16](#)
- [Jupiter Newsletter Vol. 12 No. 15](#)
- [Jupiter Newsletter Vol. 12 No. 14](#)
- [Jupiter Newsletter Vol. 12 No. 13](#)

- Pages

- [About the ALPO](#)
- [ALPO Jupiter Section](#)
- [How to submit Images/Observations](#)
- [Jupiter Alerts](#)

- Search for:

- Categories

- [IMPACT Alert!](#)
- [Jupiter Alerts](#)
- [Jupiter Newsletter](#)
- [Uncategorized](#)

- Jupiter Galilean Satellite Program

- [Eclipse Timing Form \(Editable\)](#)
- [Eclipse Visual Timing Report Form](#)
- [Eclipses for the 2016-17 Apparition](#)
- [Timing of Satellite Eclipses](#)

- Jupiter Section Links

- [BAA Jupiter Page](#)
- [International Jupiter](#)
- [Join ALPO Jupiter Groups.io Group](#)
- [Latest from NASA Galileo Homepage](#)
- [Oct 10, 1999 Occultation of Star](#)
- [The latest on GALILEO](#)
- [Websites of ALPO Jupiters Observers](#)
- [Where to Send Jupiter Observations](#)

- Observations & Images

- [Image Submissions](#)
- [Jupiter Gallery \(latest images\)](#)
- [Jupiter Images \(2005-07\)](#)

- Jupiter Events Calendar

January 2022

M T W T F S S

M T W T F S S
1 2
3 4 5 6 7 8 9
10 11 12 13 14 15 16
17 18 19 20 21 22 23
24 25 26 27 28 29 30
31
«Dec Feb»

- Meta
 - [Log in](#)
 - [Entries RSS](#)
 - [Comments RSS](#)
 - [WordPress.org](#)

Powered by [WordPress](#) Personalized by: [Larry Owens](#) Contact the [Webmaster](#)